

# ROCKETRY AT EMBRY- RIDDLE

# Trey Pietras

- ▣ ERPL
  - Hybrids
  - Liquids
  - Experimental
- ▣ Icarus



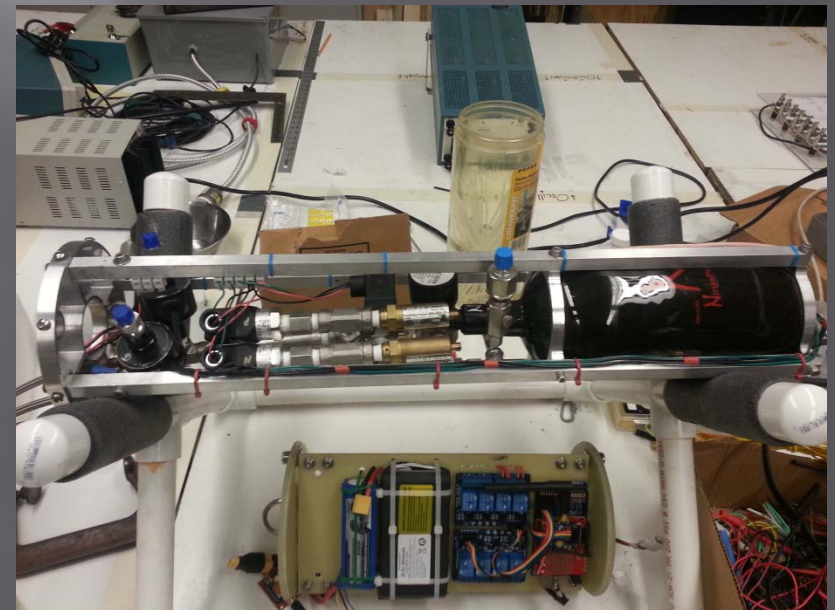
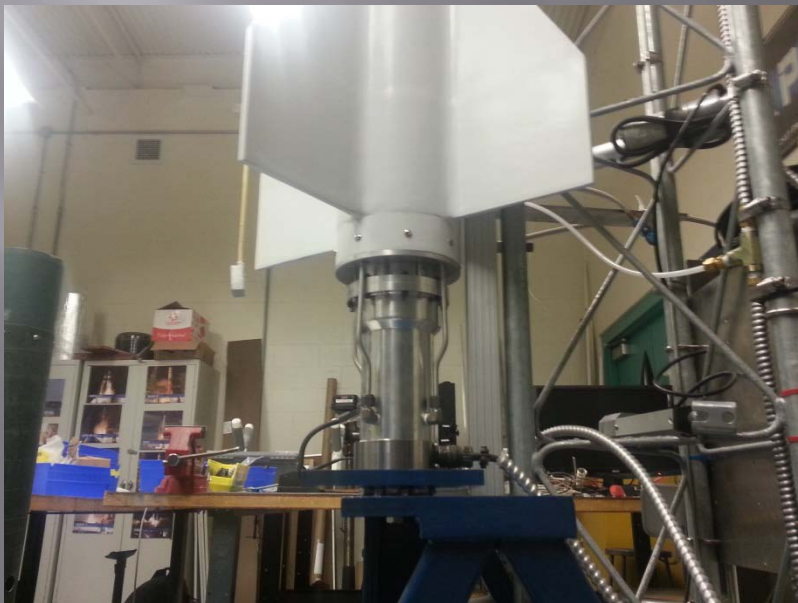
# Hybrids

- ▣ Experimental
- ▣ Competition



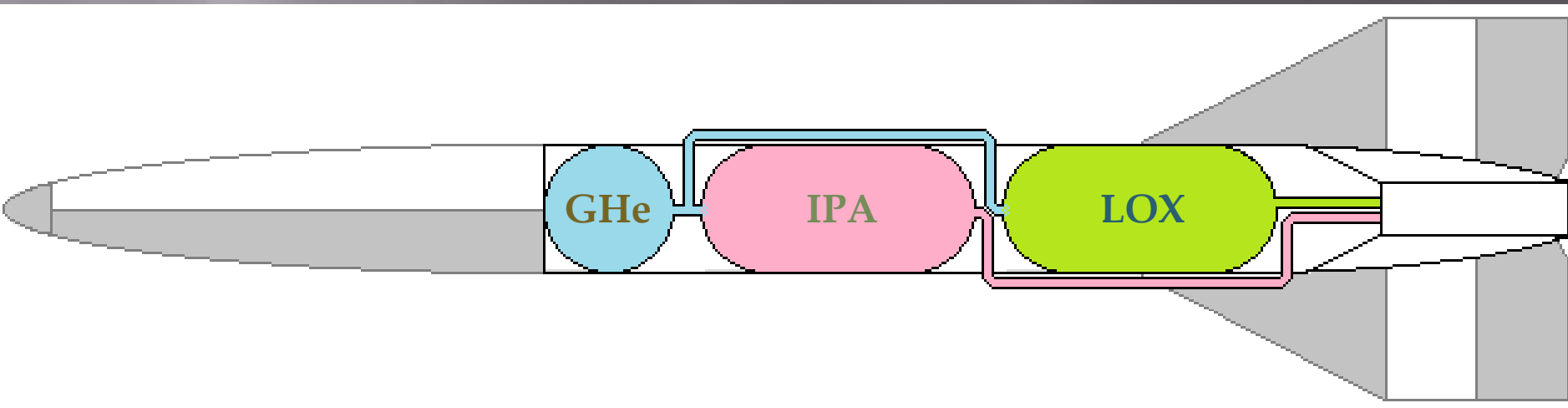
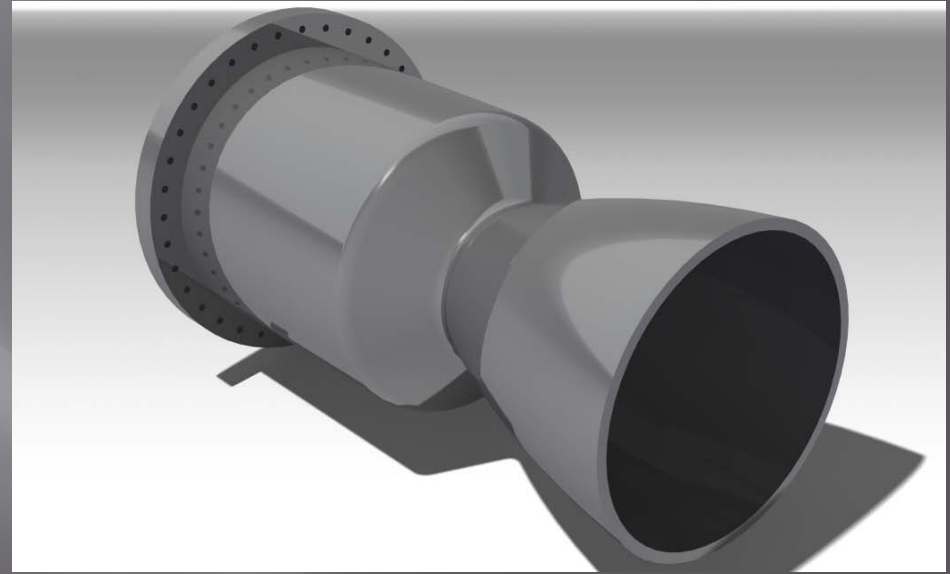
# Aquila

- ▣ Liquid Fuel
- ▣ 10,000 feet
- ▣ Isp 250s
- ▣ 500 lb. thrust



# Icarus Design

- ▣ Liquid Fuel
- ▣ 100 kilometers
- ▣ Isp 220s
- ▣ 3000 lb. thrust

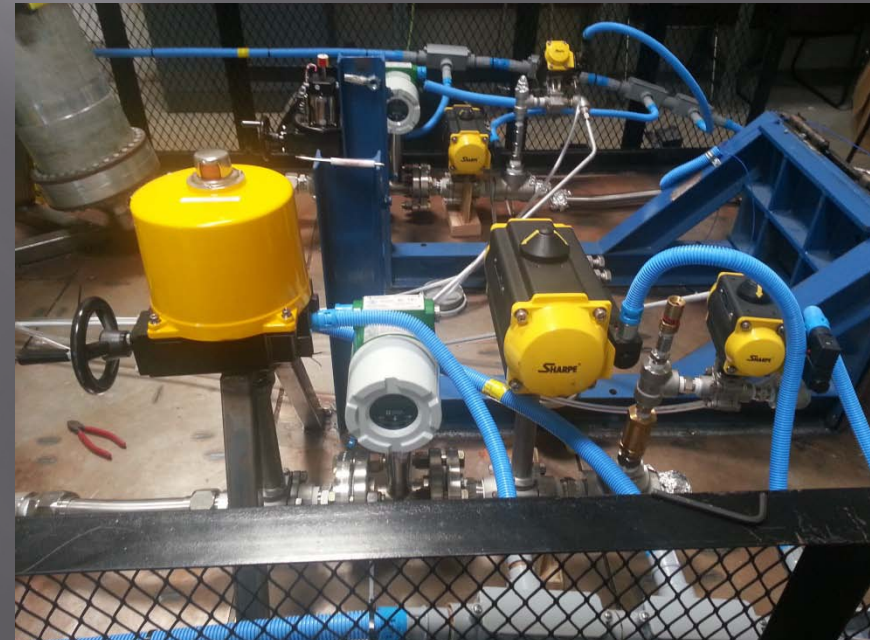


# Manufacturing

- ▣ Jet Machine Design
- ▣ Test Article – steel
- ▣ Tanks – Unknown.



# Testing



# Cryo Test

- ▣ It got quite cold





# Plans for the Project

- ▣ Test Fire Very Close
- ▣ Tweak Performance Characteristics
- ▣ Flight vehicle design
- ▣ Launch next year

# Next Generation



Questions?